



ISO9001:2015 质量认证
ISO14001:2015 环境认证
OHSAS18001:2007 健康认证

技术文件 Technical Data Sheet

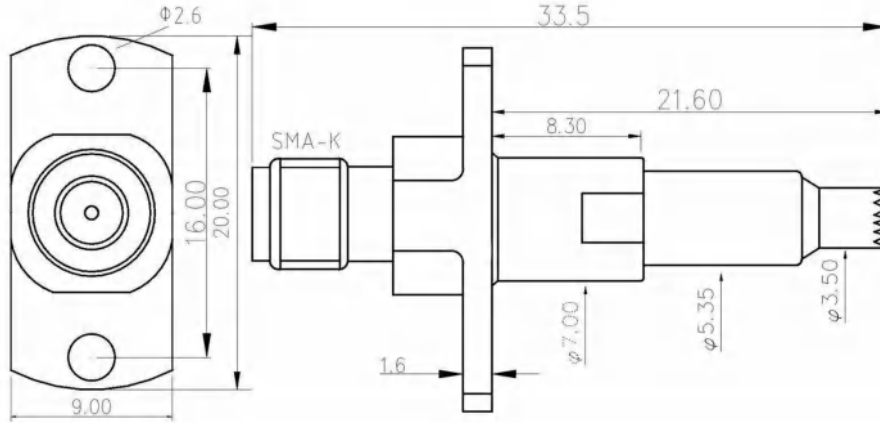
文档编号 DN: XQY002-1700110-E

XQY-SMA-TG1035-Z

精密高频测试探针

precision High frequency test probe

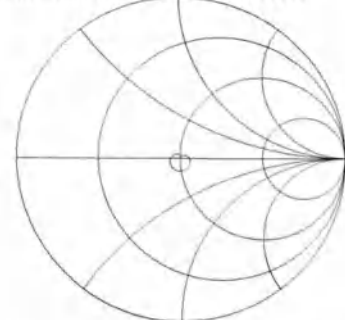
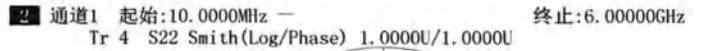
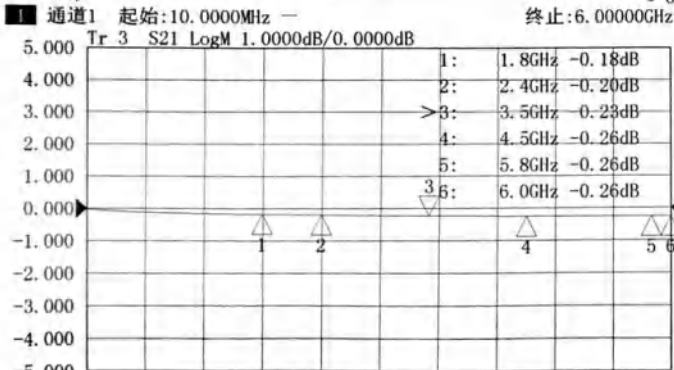
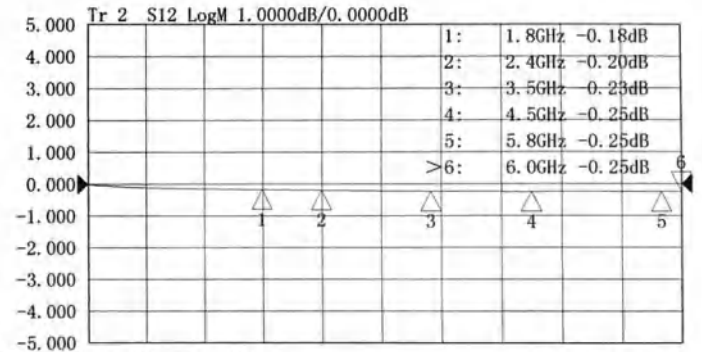
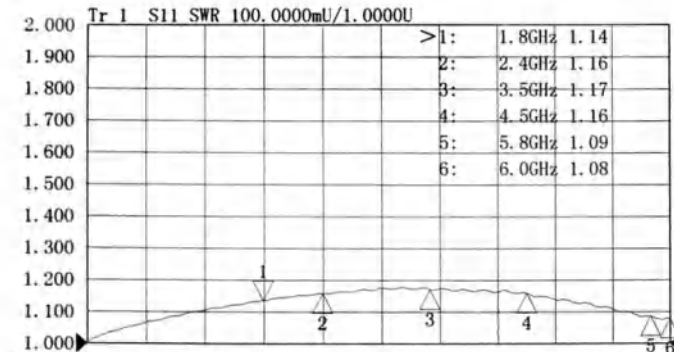
参数/Parameters	规格/Specifications
频率范围 Frequency Range	DC-11 GHz
插入损耗 Insertion loss	0.05dB max. (DC-3GHz)
	0.25dB max. (3GHz-6GHz)
	0.35dB max. (6GHz-11GHz)
电压驻波比 Voltage VSWR	1.1max. (DC-3GHz)
	1.2max. (3GHz-6GHz)
	1.4max. (6GHz-11GHz)
接触电阻 Contact Resistance	内导体之间 Between Inner conductors $\leq 3 \text{ m}\Omega$
	外导体之间 Between external conductor $\leq 2 \text{ m}\Omega$
	绝缘电阻 Insulation Resistance $\geq 1000 \text{ M}\Omega$
阻抗 Impedance	50 Ohms
材料 Material	插针 Pin: 铍青铜 镀金 Beryllium Bronze gold plating
	绝缘层 Insulating layer: 聚四氟乙烯 PTFE
	外壳 Shell: 黄铜 镀金 Brass gold plating
	接头 Connector: 不锈钢 钝化 Stainless steel passivation
外形尺寸 Outline Dimensions	33.5*20*9 (mm)
工作温度 Operation Temperature	-25°C ~ +185°C
耐用性 Durability	≥ 50000 times 次



注: 尺寸(mm/[英寸]) , 一般公差(± 0.05)

Note: Dimensions (mm / [inch]), General tolerance (±0.05)

测试报告/Test report:



通道1 起始:10.0000MHz 终止:6.0000GHz

通道1 起始:10.0000MHz 终止:6.0000GHz

适配焊盘规格/Adapter pad specification:

测试焊盘规格 Test pad specification	焊盘尺寸范围 Pad size range		
	测试点直径 Test point diameter	GND 内径 GND internal diameter	GND 外径 GND external diameter
	≥0.9mm	≥2.3mm	≥3.9mm
	≤1.2mm	≤2.9mm	≤4.3mm